

# Mid Point Review Report

Team # 17

**Michael Bunne, John Jagusztyn, and Jonathan Lenoff**

*Department of Mechanical Engineering, Florida State University, Tallahassee, FL*

*Project Sponsor:*



*Project Advisors:*

**Dr. Emmanuel G. Collins, Ph.D**

*Department of Mechanical Engineering*

**Dr. Oscar Chuy, Ph.D**

*Department of Mechanical Engineering*

# Introduction

## Problem Statement

The current generation of assistive walking devices is limited in their traversable terrain and functionality.

- Indoor operation only
- Only perform basic functions
- Scooters / electric wheelchairs unnecessary or expensive

## Proposed Solution

Develop a walking assistive device designed to actively assist the user in both indoor and outdoor maneuverability.

- Further empower the disabled and elderly community
- Offer wide-range of assistive functions
- Maintain ease of use and intuitiveness integral to current generation walkers

## Project Scope

Design and build an initial research platform

- Traverse indoor & outdoor terrains
- Utilize a force-driven user input system
- Facilitate simple future enhancement



# Specifications

## Frame

- Resemble current generation walker in aesthetics and standards
- Aluminum framing
- Supports up to 300 pounds
- Adjustable heights between 32 and 39 inches
- Adjustable handle width between 14 and 23 inches

## Propulsion

- Minimum 11 inch diameter wheels or tracks
  - Travel over all indoor surfaces, grass, gravel...
  - Travel up or down slopes up to 10 °
- Move transversely 45° from the center axis
- Maximum operating speed of 3 mph

## Control & Function

- Intuitive user input
  - Force-based drive control
- Fall Prevention
- Sit-Down/Stand-Up Assistance
- Object Detection/Avoidance
- Localization & Navigation

## Criteria

### Maximize:

- Versatility
- Robustness
- User-friendliness
- Indoor operation
- Outdoor operation

### Minimize:

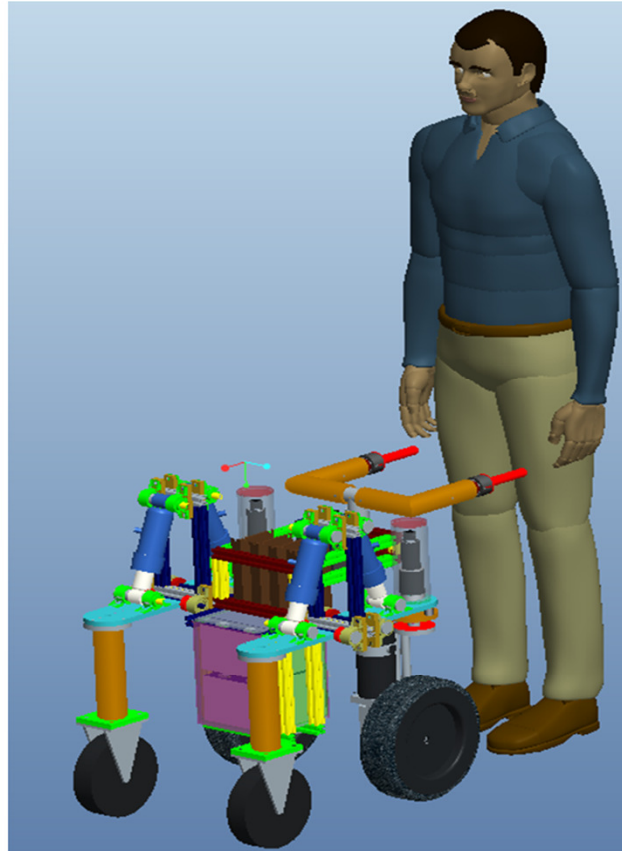
- Cost
- Weight

# Design Modifications



(previous design)

# Design Modifications

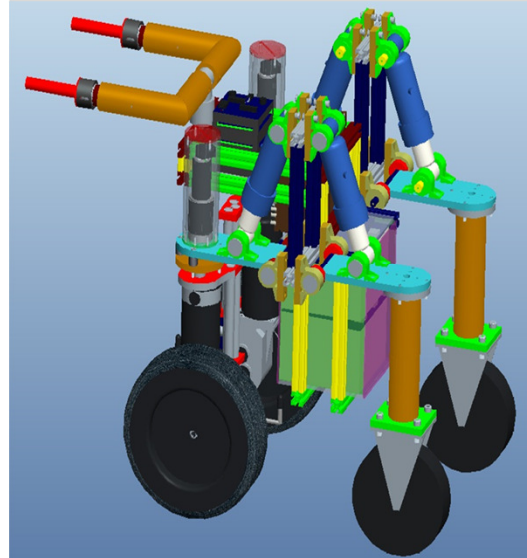


(new design)



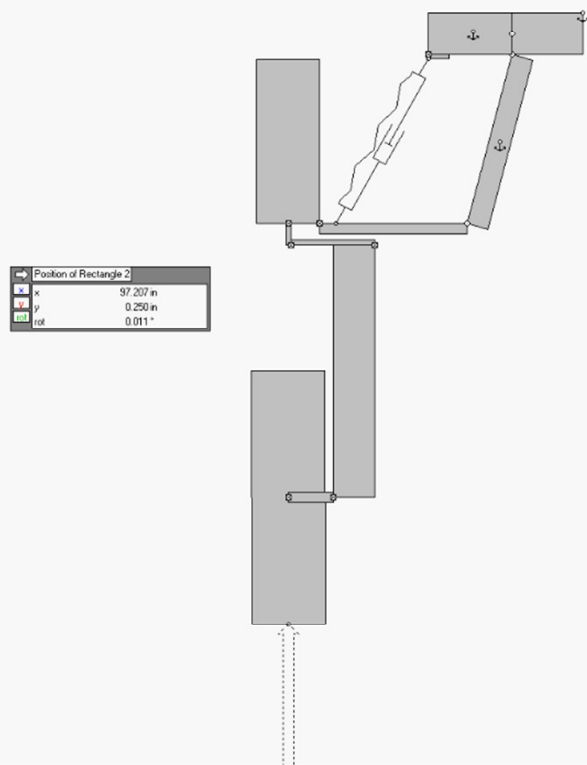
# Design Modifications

- **Suspension Orientation**
- **Frame / Supports**
- **Handle Depth**
- **Driving Motor Encoder**



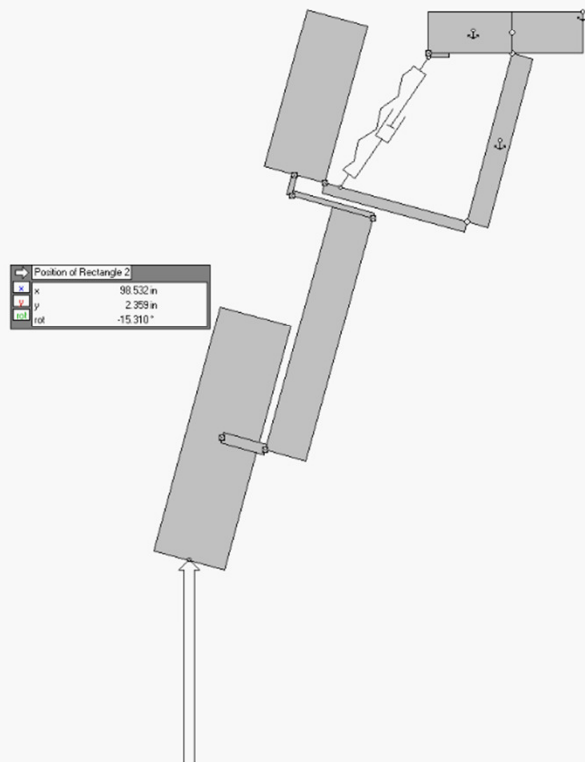
# Design Modifications

- Suspension Orientation



# Design Modifications

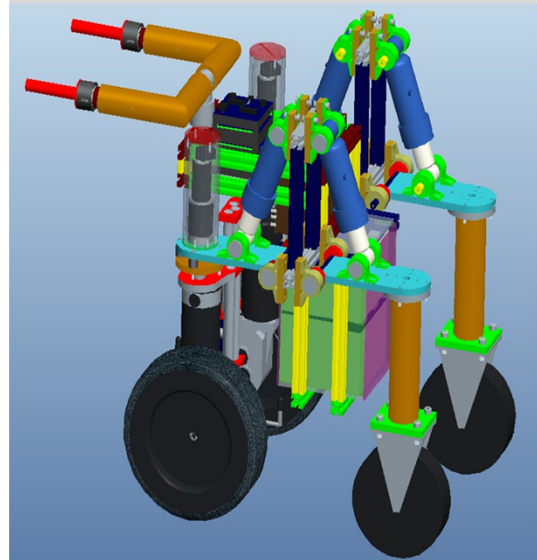
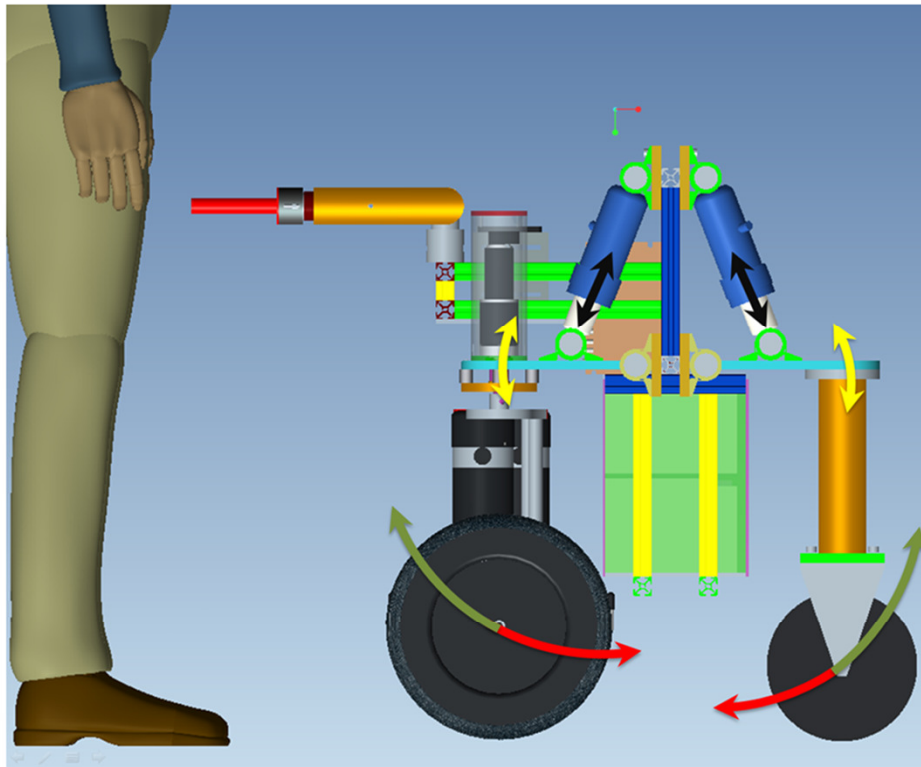
- Suspension Orientation





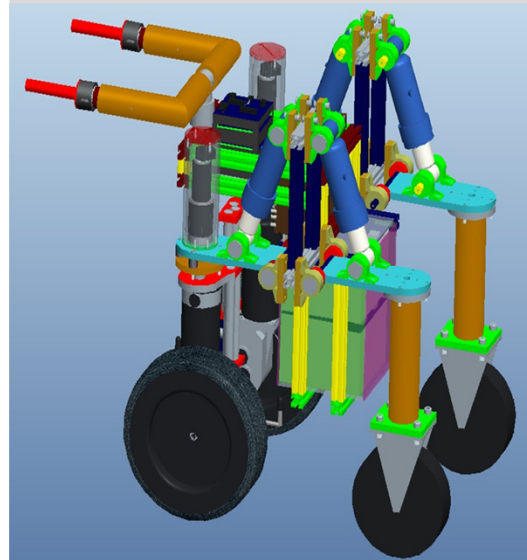
# Design Modifications

- Suspension Orientation



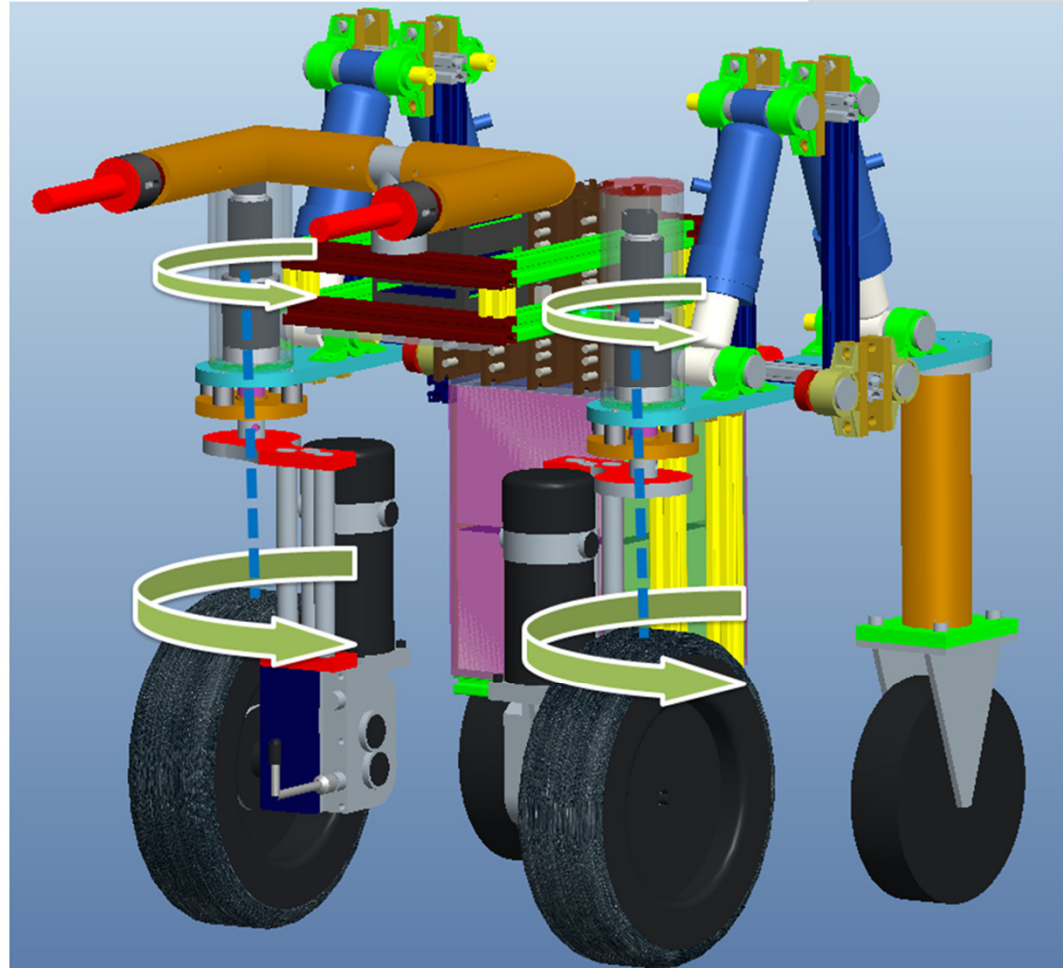
# Design Modifications

- Suspension Orientation
- **Frame / Supports**
- Handle Depth
- Driving Motor Encoder



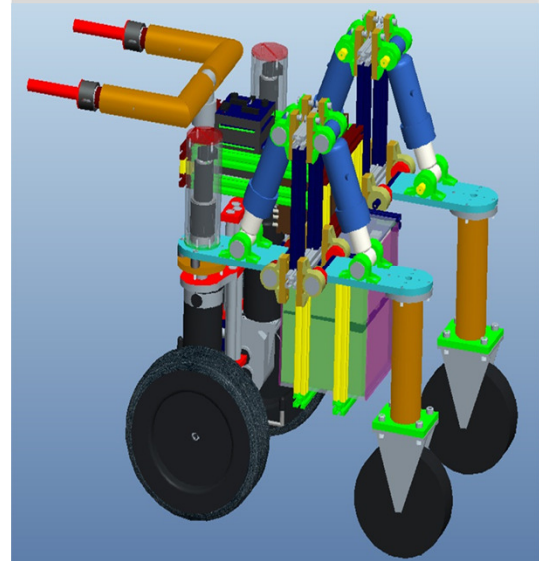
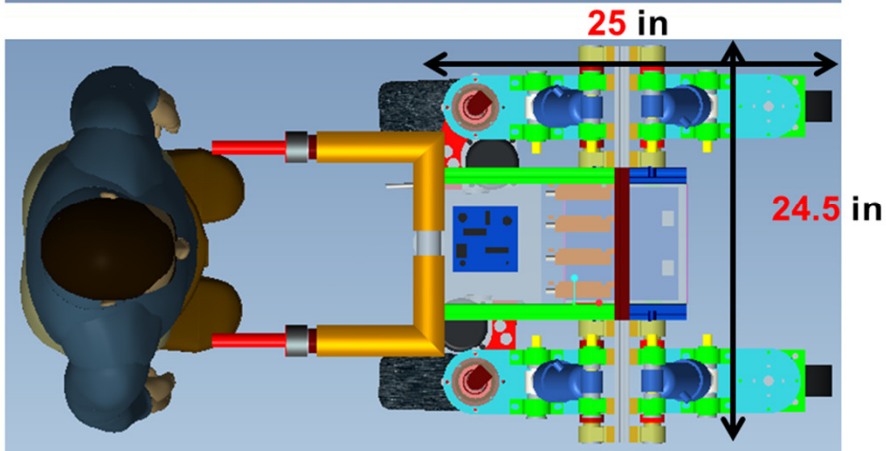
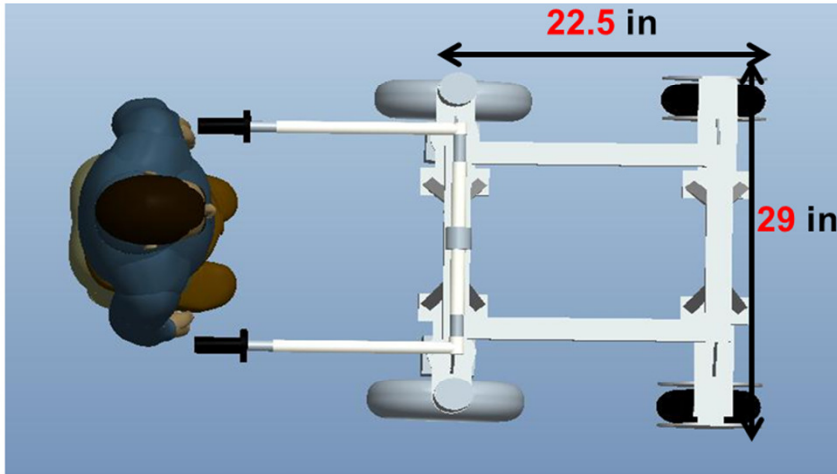
# Design Modifications

- Frame / Supports



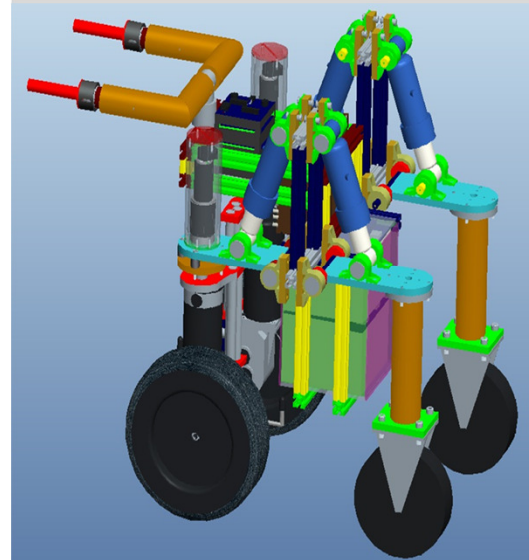
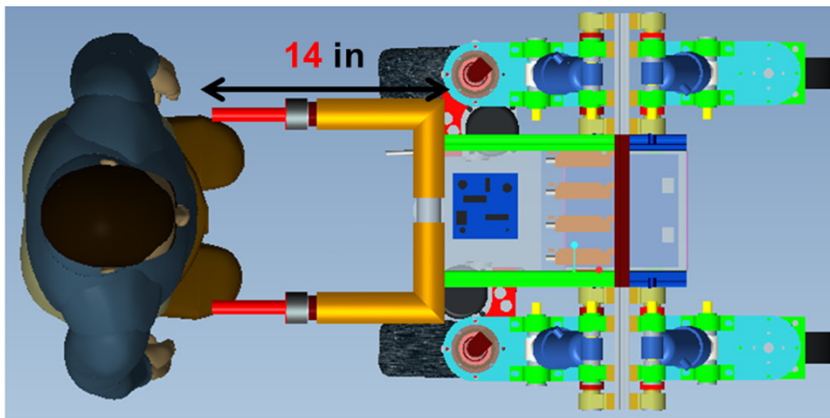
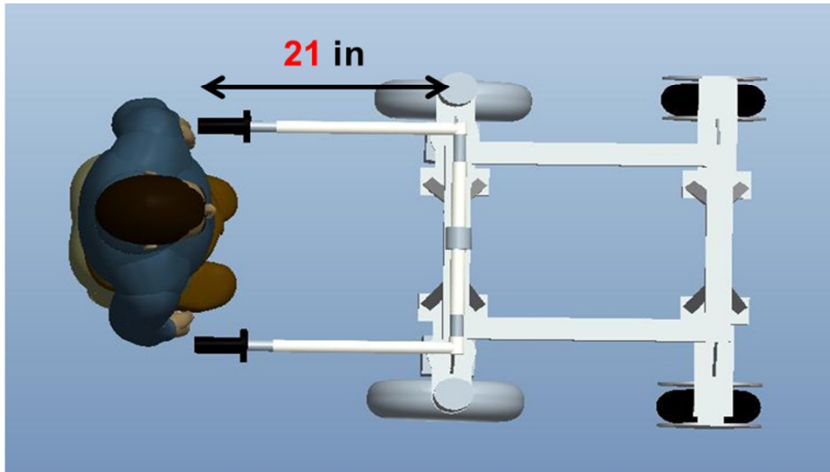
# Design Modifications

- Frame / Supports



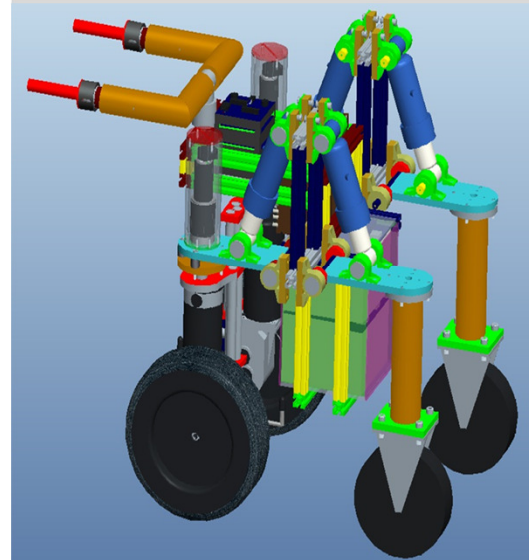
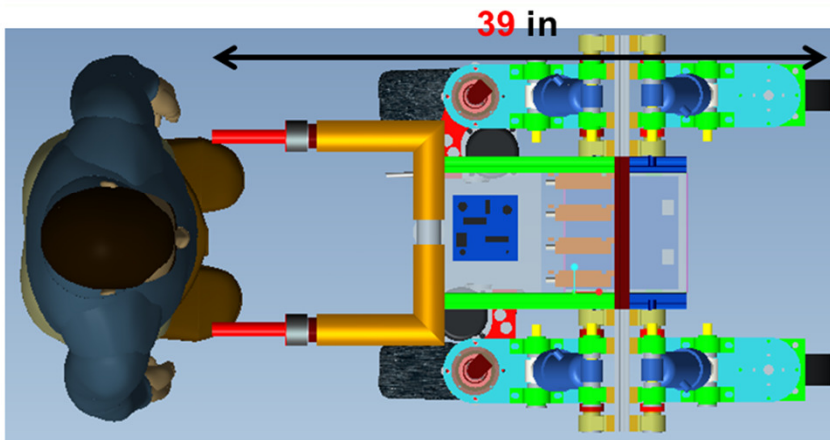
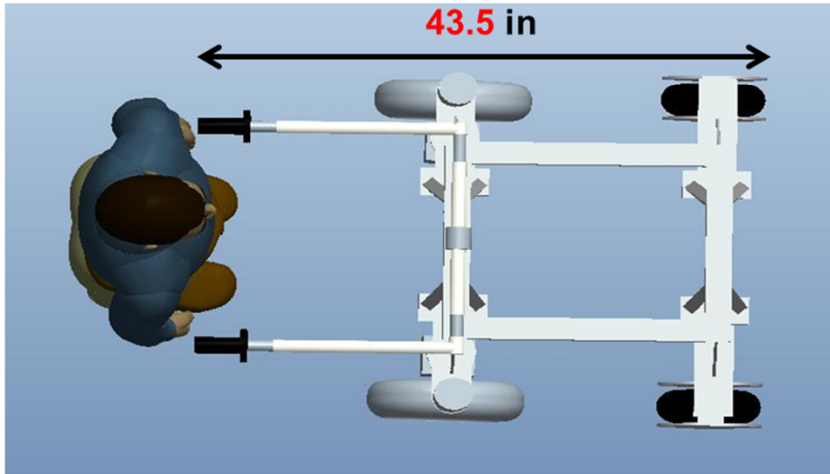
# Design Modifications

- Handle Depth



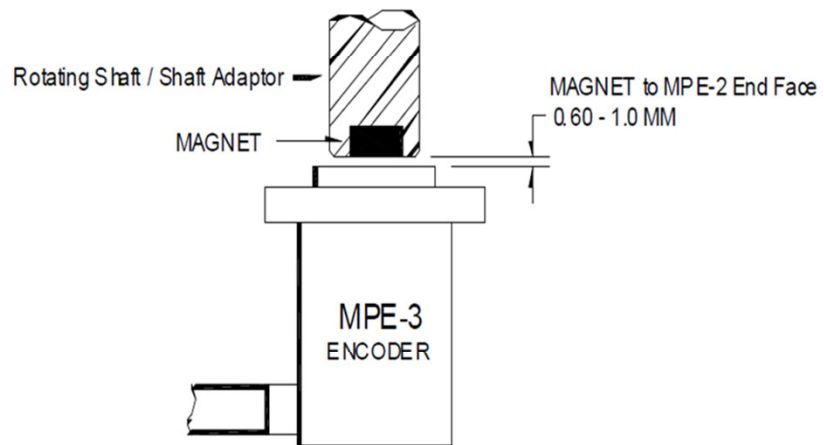
# Design Modifications

- Handle Depth

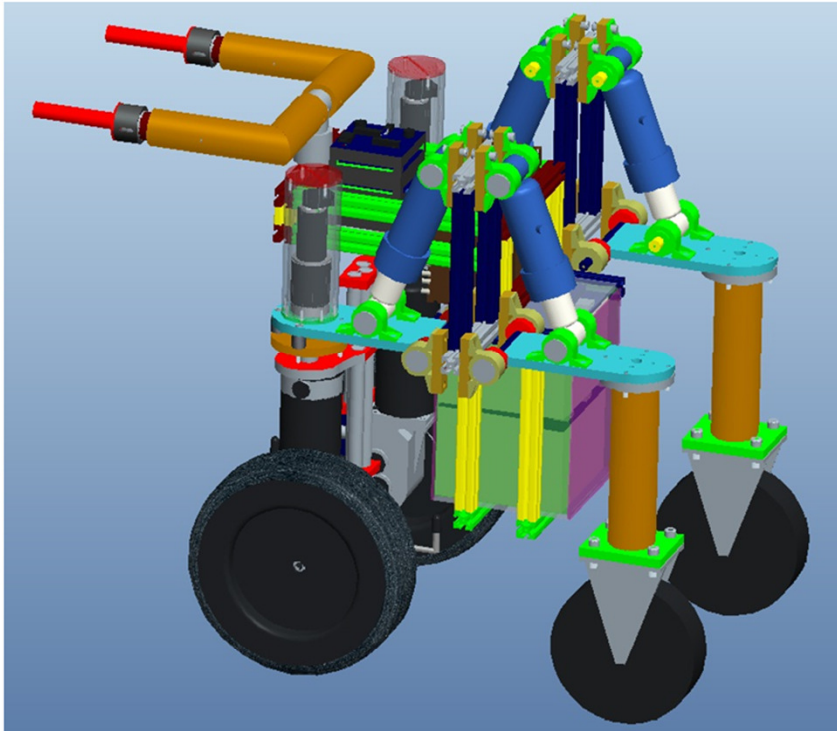


# Design Modifications

- Driving Motor Encoder



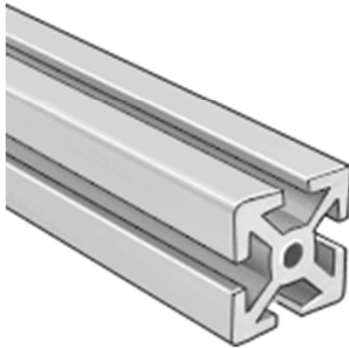
# Current Status



1) Design Finalization



# Current Status

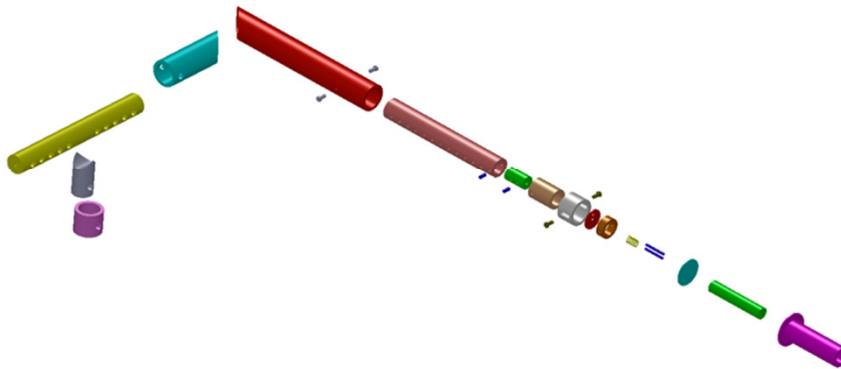


1) Design Finalization

2) Final Ordering

- Small connectors
- Fasteners

# Current Status



1) Design Finalization

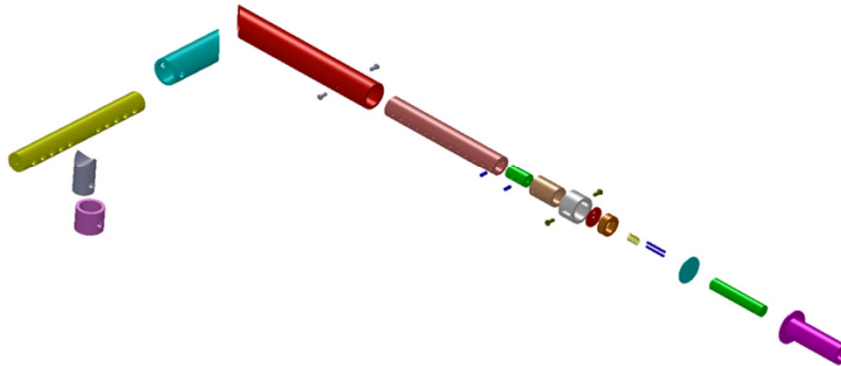
2) Final Ordering

- Small connectors
- Fasteners

3) Receiving

- Handle Assembly
- Steering Motor
- Driving Motor
- Driving Wheels
- Batteries

# Current Status



1) Design Finalization

2) Final Ordering

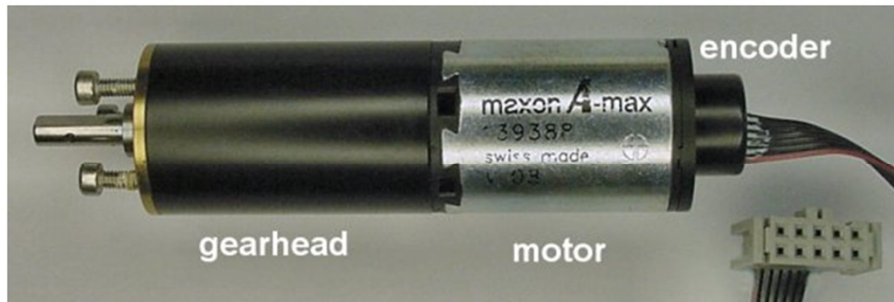
- Small connectors
- Fasteners

3) Receiving

- Handle Assembly
- Steering Motor
- Driving Motor
- Driving Wheels
- Batteries

4) Machining

# Current Status



1) Design Finalization

2) Final Ordering

- Small connectors
- Fasteners

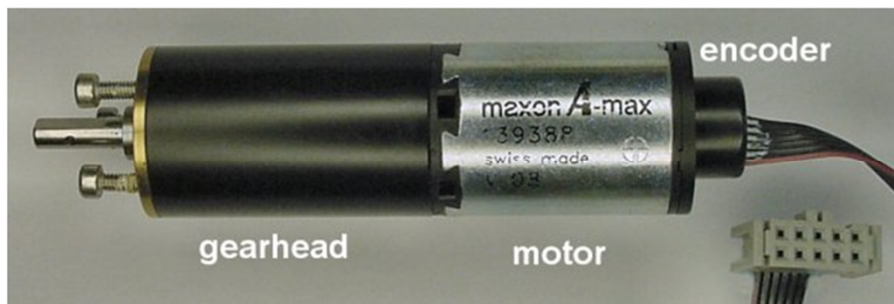
3) Receiving

- Handle Assembly
- Steering Motor
- Driving Motor
- Driving Wheels
- Batteries

4) Machining

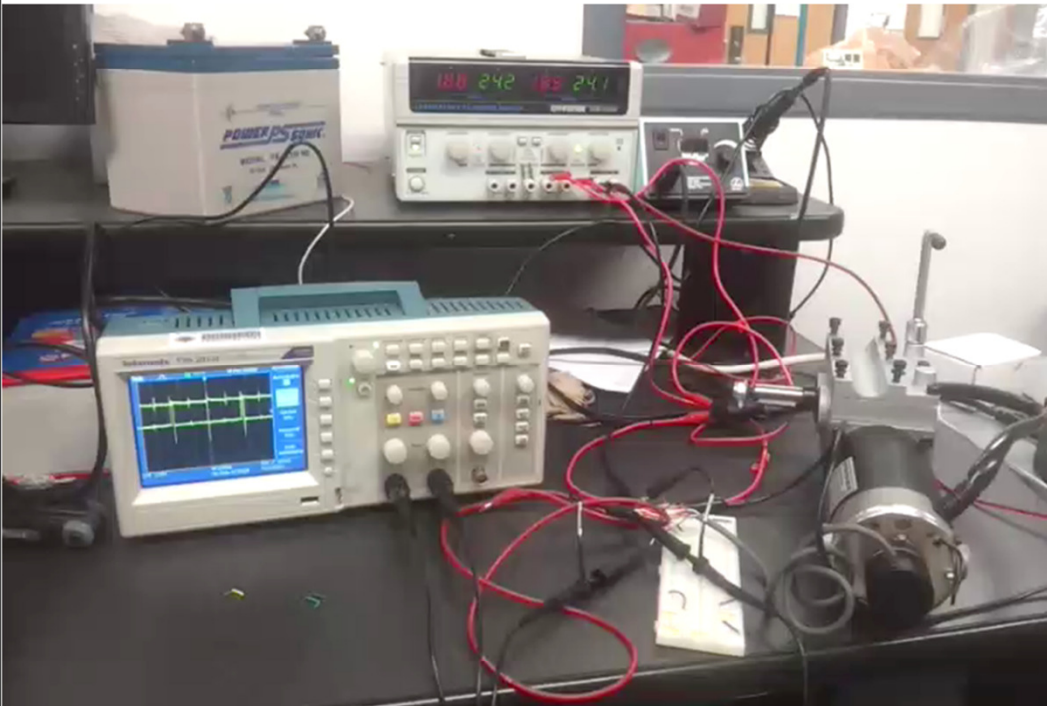
5) Initial Testing

# Completed Tests



## 1) Steering Motors

# Completed Tests



- 1) Steering Motors
- 2) Driving Motors & Encoders

# Completed Tests



- 1) Steering Motors
- 2) Driving Motors & Encoders
- 3) Air Shocks

# Future Work

- Complete Final Order
- Finalize Machine Drawings
- Machine Components
  
- Further Air Shock Tests
- Assemble Components:
  - Handles
  - Frame
  - Suspension
- Basic Controls
  
- Full Assembly Testing/Modification
- Final Report
- Open House

## Potential Problems:

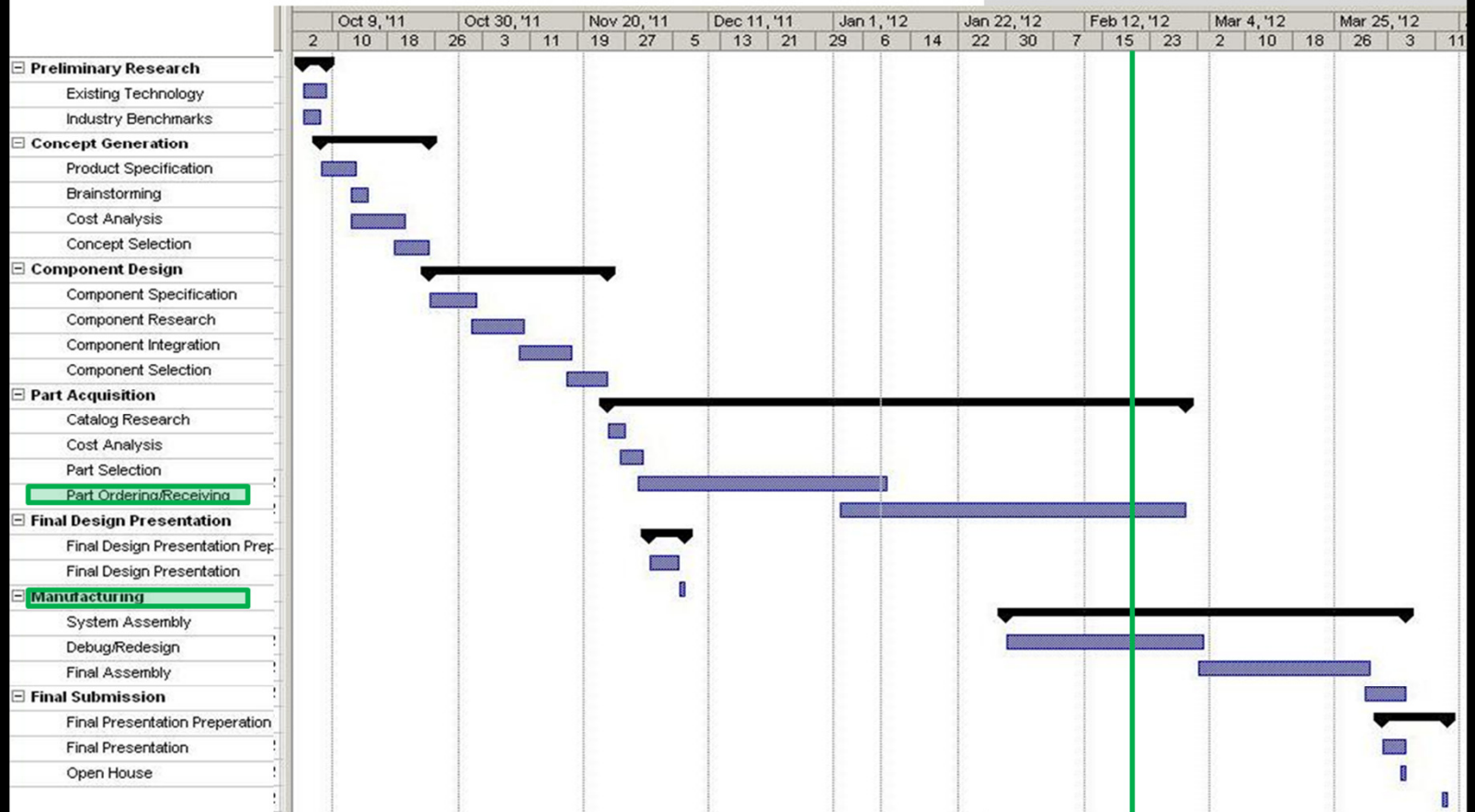
- 1) Delivery Delay
- 2) Machining Back-up
- 3) Unforeseen Assembly Difficulties
- 4) Minimum Spring Stiffness
- 5) Steering Motor Torque



# Budget

<b>FSU Project Budget Allowance</b>	<b>\$5,000.00</b>
<b>Total Money Spent as of 2/16/2012</b>	<b>\$4,673.41</b>
<hr/>	
<b>Available funds as of 2/16/2012</b>	<b>\$326.59</b>
<b>Expected Future Purchase Costs</b>	<b>\$250.00</b>
<hr/>	
<b>Remaining funds</b>	<b>\$76.59</b>

# Timeline



**Questions?**